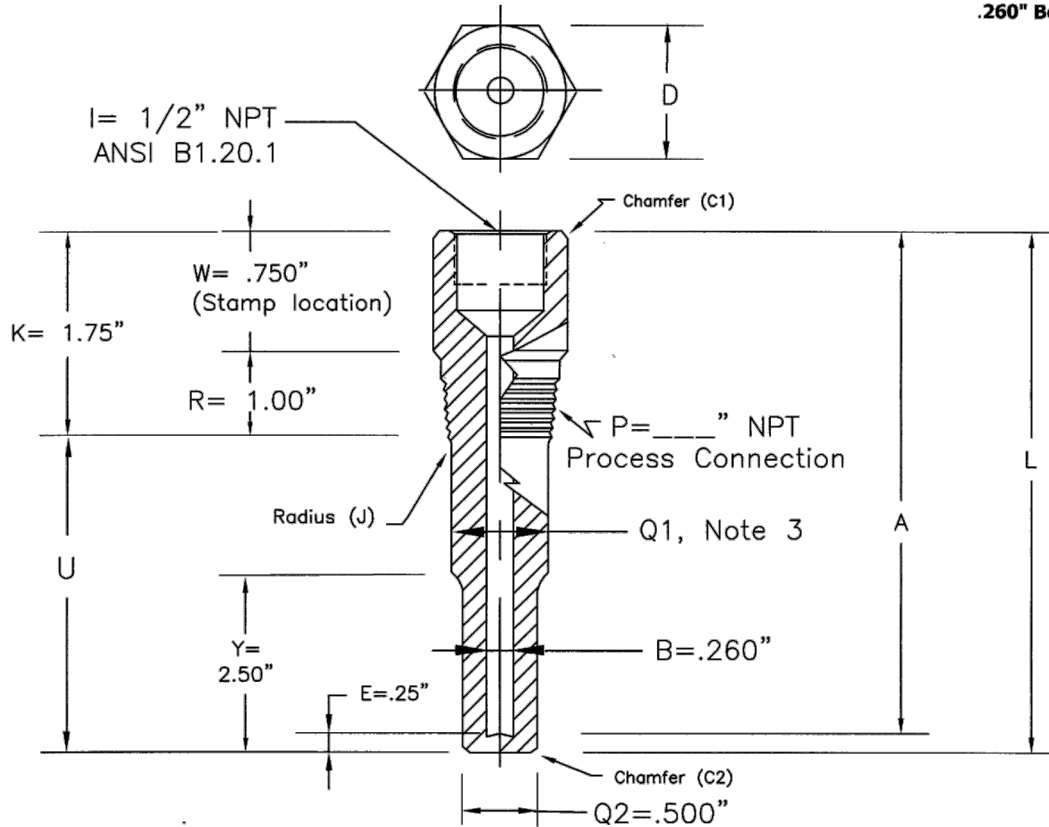




# THERMOCOUPLE TECHNOLOGY, INC.

**Threaded  
Reduced  
.260" Bore**



T 5 0	<p><b>1/2" Process Connection</b>  <b>Style 10001</b>  <b>Specifications: See Notes 1-4</b>            a. "W" = 1.00", "R" = .750" and            b. "D" = 1-1/8" hex, See Note 2</p>	<p><b>1. STANDARD BIMET LENGTHS:</b></p> <table border="1"> <thead> <tr> <th>"A"</th> <th>"U"</th> <th>"L"</th> </tr> </thead> <tbody> <tr> <td>2.5"</td> <td>1</td> <td>2.75" See Note 3a</td> </tr> <tr> <td>2.5"</td> <td>1.625</td> <td>See Limited Space Series</td> </tr> <tr> <td>4"</td> <td>2.5</td> <td>4.25" See Note 3a.</td> </tr> <tr> <td>6"</td> <td>4.5</td> <td>6.25"</td> </tr> <tr> <td>9"</td> <td>7.5</td> <td>9.25"</td> </tr> <tr> <td>12"</td> <td>10.5</td> <td>12.25"</td> </tr> <tr> <td>15"</td> <td>13.5</td> <td>15.25"</td> </tr> <tr> <td>18"</td> <td>16.5</td> <td>18.25"</td> </tr> <tr> <td>24"</td> <td>22.5</td> <td>24.25"</td> </tr> </tbody> </table> <p><b>2. STANDARD HEX MATERIALS:</b>            304:304/Lss            316:316/Lss            CS:CS 1018            BR: Brass            a. Other material grades are available only in round bar with (2) wrench flats.</p> <p><b>3. STANDARD SHANK O.D.s:</b>            T50 Q1 = .625"            T75: Q1 = .750"            T10: Q1 = .875"            a.U2.50" &amp; LESS: Q1 &amp; Q2 = .500"</p> <p><b>4. TOLERANCES:</b>            Reference document: Series T</p>	"A"	"U"	"L"	2.5"	1	2.75" See Note 3a	2.5"	1.625	See Limited Space Series	4"	2.5	4.25" See Note 3a.	6"	4.5	6.25"	9"	7.5	9.25"	12"	10.5	12.25"	15"	13.5	15.25"	18"	16.5	18.25"	24"	22.5	24.25"
"A"	"U"		"L"																													
2.5"	1		2.75" See Note 3a																													
2.5"	1.625	See Limited Space Series																														
4"	2.5	4.25" See Note 3a.																														
6"	4.5	6.25"																														
9"	7.5	9.25"																														
12"	10.5	12.25"																														
15"	13.5	15.25"																														
18"	16.5	18.25"																														
24"	22.5	24.25"																														
T 7 5	<p><b>3/4" Process Connection</b>  <b>Style 10002</b>  <b>Specifications: See Notes 1-4</b>            "D" = 1-1/8" hex, See Note 2</p>																															
T 1 0	<p><b>1" Process Connection</b>  <b>Style 10003</b>  <b>Specifications: See Notes 1-4</b>            "D" = 1-3/8" hex, See Note 2</p>																															

STYLES 10001, 10002, 10003

Thermocouple Technology, Inc.  
 350 New Street  
 Quakertown, Pa 18951  
 Phone: 215-529-9394 FAX: 215-529-9397 www.tteconline.com