



SERIES 19000 STRIP PANELS

The convenience of front mounting and wiring is afforded by the use of TEEC's strip panels with integral fastening device. The alloys of inserts match ISA thermocouple calibrations. Alloy and circuit numbers are identified on face of strip with corresponding circuit numbers and polarity on back. Inserts are collet type and spring loaded with negative inserts larger than positive to eliminate polarity errors. Bodies are molded of high impact, shock resistant compound.

ORDERING STEPS for Styles 19001 and 19002

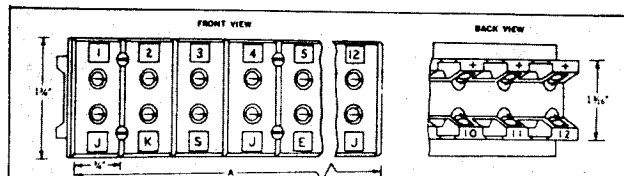
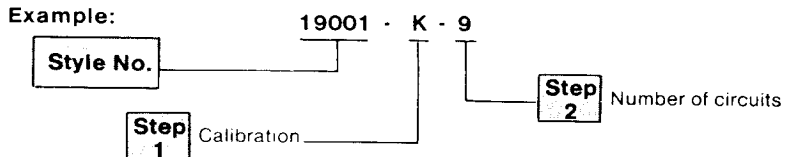
Step 1 CALIBRATION

- E - Chromel - constantan
- J - Iron - constantan
- K - Chromel - alumel
- T - Copper - constantan
- P - Platinum 10% Rh-platinum
- R - Platinum 13% Rh-platinum
- B - Platinum 30% Rh-platinum 6% Rh
- W - Tungsten - tungsten Re
- U - Uncompensated

Step 2 NUMBER OF CIRCUITS

Specify number of circuits

HOW TO ORDER



Style 19001 Polarized strip panel, max. temperature 300°F - 2 to 12 circuits.

Style 19002 Polarized strip panel, max. temperature 1000°F - 2 to 12 circuits.

ORDERING STEPS for Style 19003

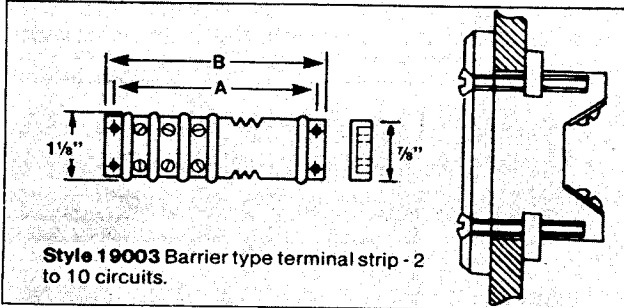
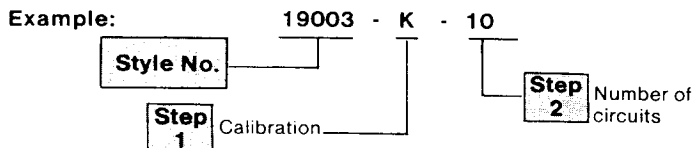
Step 1 CALIBRATION

See Calibration Step 1 above.

Step 2 NUMBER OF CIRCUITS

Specify number of circuits.

HOW TO ORDER



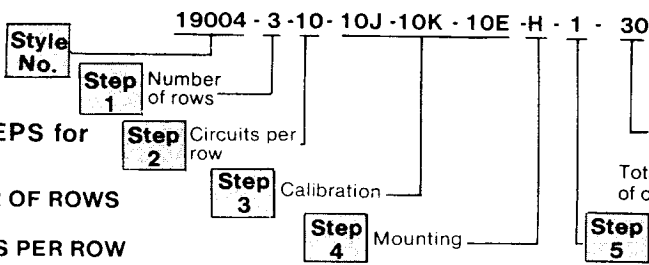
Style 19003 Barrier type terminal strip - 2 to 10 circuits.

Dimensions for Strip Panel Mounting Cutout

dimen- sions	number of circuits											
	2	3	4	5	6	7	8	9	10	11	12	
"A"	1 1/2"	2 1/4"	3"	3 3/4"	4 1/2"	5 1/4"	6"	6 3/4"	7 1/2"	8 1/4"	9"	
"C"	1 5/16"	2 1/16"	2 13/16"	3 9/16"	4 5/16"	5 1/16"	5 13/16"	6 9/16"	7 5/16"	8 1/16"	8 13/16"	

HOW TO ORDER

Example:



ORDERING STEPS for Style 19004

Step 1 NUMBER OF ROWS

Specify

Step 2 CIRCUITS PER ROW

Specify

Step 3 CALIBRATION

Refer to Step 1 for Styles 19001, 19002.

Step 4 MOUNTING

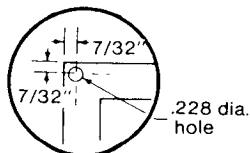
- V - Vertical
- H - Horizontal

Step 5 NUMBERING SEQUENCE

Specify numbering sequence if other than series beginning with 1.

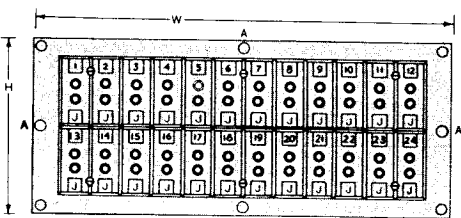
Step 6 CIRCUITS

Specify total number of circuits.



Strip panel frame detail for panel mounting holes: Mounting holes "A" are used only when "H" and "W" dimensions exceed 13-1/2".

STRIP PANEL with MOUNTING FRAME. TTEC modules can be assembled to accommodate any number of connectors. The one piece mounting frame is a dull black, rigid steel 3/32" thick.



Style 19004 Strip panel with mounting frame.

Dimensions for Panel Assembly H₀ and W₀ are Mounting Cutout Dimensions

NUMBER OF ROWS		CIRCUITS PER ROW																							
		2	3	4	5	6	7	8	9	10	11	12	13	14	15	16	17	18	19	20	21	22	23	24	
1	H = 2 1/2" H ₀ = 1 1/2"	2	3	4	5	6	7	8	9	10	11	12	13	14	15	16	17	18	19	20	21	22	23	24	
2	H = 4 1/2" H ₀ = 3 1/4"	4	6	8	10	12	14	16	18	20	22	24	26	28	30	32	34	36	38	40	42	44	46	48	
3	H = 6 1/2" H ₀ = 5"	6	9	12	15	18	21	24	27	30	33	36	39	42	45	48	51	54	57	60	63	66	69	72	
4	H = 7 1/2" H ₀ = 6 1/4"	8	12	16	20	24	28	32	36	40	44	48	52	56	60	64	68	72	76	80	84	88	92	96	
5	H = 9 1/2" H ₀ = 8 1/2"	10	15	20	25	30	35	40	45	50	55	60	65	70	75	80	85	90	95	100	105	110	115	120	
6	H = 11 1/2" H ₀ = 10 1/2"	12	18	24	30	36	42	48	54	60	66	72	78	84	90	96	102	108	114	120	126	132	138	144	
7	H = 13 1/2" H ₀ = 12"	14	21	28	35	42	49	56	63	70	77	84	91	98	105	112	119	126	133	140	147	154	161	168	
8	H = 14 1/2" H ₀ = 13 1/4"	16	24	32	40	48	56	64	72	80	88	96	104	112	120	128	136	144	152	160	168	176	184	192	
9	H = 16 1/2" H ₀ = 15 1/2"	18	27	36	45	54	63	72	81	90	99	108	117	126	135	144	153	162	171	180	189	198	207	216	
10	H = 18 1/2" H ₀ = 17 1/4"	20	30	40	50	60	70	80	90	100	110	120	130	140	150	160	170	180	190	200	210	220	230	240	